

## Activity Page

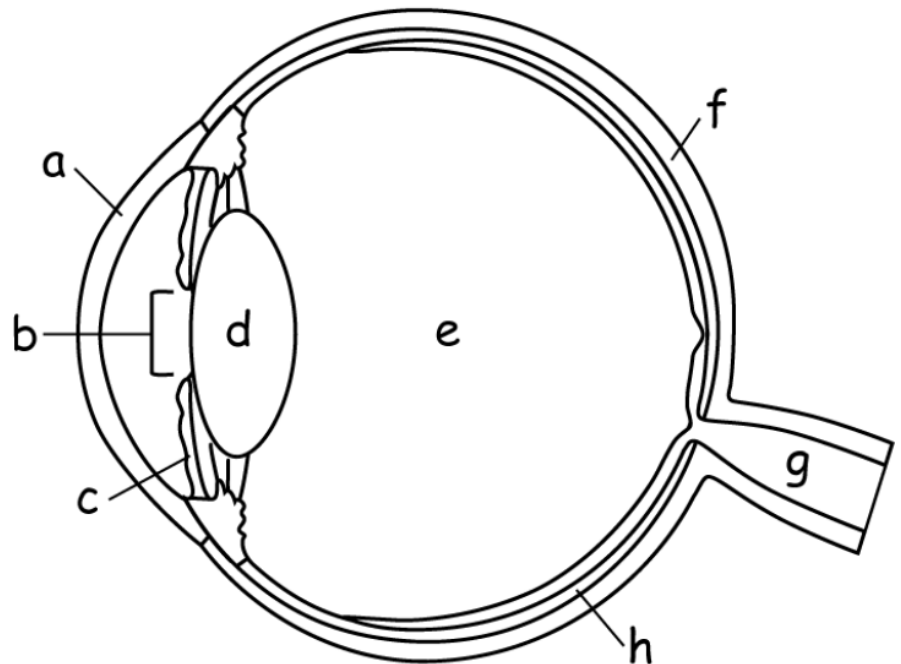
Name \_\_\_\_\_

Date \_\_\_\_\_

### What's in Your Eye?

Your eye is one of the most sensitive instruments in the world! Learn how it works by coloring in the different parts with crayons, colored pencils, or colored markers.

- a. Cornea (gray)
- b. Pupil (red)
- c. Iris (blue)
- d. Lens (pink)
- e. Vitreous humor (orange)
- f. Sclera (white)
- g. Optic nerve (yellow)
- h. Choroid (green)



Cornea – A thick, clear covering that protects the eye.

Pupil– A hole in the iris that lets light into the eye.

Iris – A colorful, circular muscle that controls how much light gets into the eye.

Lens – A still, clear tissue that focuses light.

Vitreous humor – A dense liquid that fills up the eyeball.

Sclera – The white part of the eyeball.

Optic nerve – Relays electrical signals from the eye into the brain.

Choroid – A dark layer of tissue at the back of the eye that absorbs extra light.